



# BOWTIE 101

JUNE 2018 VOLUME 3

All Cal 2018- This year's meet was hosted by the Sierra View Region, where they based the event out of Oroville, CA. It was a great time and our region had two members there- Anthony and Richard Palazzo. Of course Genevieve was there in as well (she has not missed an All Cal since she was born, in fact she was still in mommy's tummy on her first one). Thursday night was a hosted ice cream social and turn in of the can tabs. Steve Cochran supplied our region's tabs to the tune of 2.7 pounds. Not a bad haul. The big winner was the San Fernando Region at a whopping 101 pounds!

The Friday tour was wonderful! We toured up through the Oroville area to a home shop tour, then up to Chico and saw the New Clairvaux Winery and Monastery. The main chapel on site was moved to California by Hearst then given to the monks and ultimately became part of the winery. The church still runs the operation to this day. We drove over 100 miles on the first day

The Saturday tour took us to the Oroville dam, where we learned all about the averted disaster of 2017

Cont. on page 2



*NEW CLAIRVAUX WINERY*



All Cal- Each year one of the regions in California hosts the tour and events during the week. The location rotates between the north and south and is a great time!



*ICE CREAM AND SHOP TOUR*



*SIERRA VIEW REGION CLUBHOUSE*



# BOWTIE 101

where the spillway nearly failed and flooded the valley. The sheer size of the work they are taking on is incredible.

We then toured Bolt's Antique Tool Museum and the Chinese Temple in downtown Oroville. Both were fascinating tributes to the history of Oroville and the people that shaped the area.

After returning to the Feather River Fall Casino, the Sierra View Region hosted a car show for the public and other clubs in the area. There was a great turnout and a good time was had by all.

The banquet was catered event at the Casino and the Palazzo clan were big winners of the raffle prizes, with each one of us winning a prize. Genevieve served as the ticket puller. She picked right!

We wrapped up the evening said our goodbyes and were excited to hear that next year's All Call will be based in Bakersfield and hosted by the Southern California Region and 2020 will be in Scotts Valley.

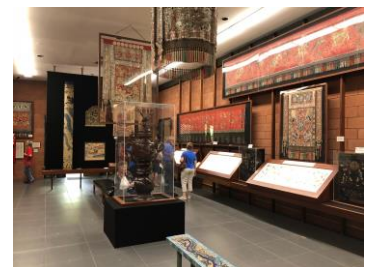
- Anthony



*BOLT'S TOOL MUSEUM*



In 2017 The Oroville damn spillway nearly failed. The main spillway was damaged due to heavy storms and the emergency spillway flowed over. Engineers had to maximize the flow to the spillway without causing more damage while allowing the emergency spillway to flow as well so it would not fail.



*CHINESE TEMPLE, CAR SHOW AND RAFFLE WINNER!*





# BOWTIE 101

## Car Number Plates by Steve Kassis of The Filling Station

One common misconception with our old cars is that there was a VIN number used on early Chevrolets. Chevrolet did not use a VIN (Vehicle Identification Number) until the mid 1950's. There are no stamped serial numbers on the frame so engine serial numbers were commonly used by Motor Vehicle Departments for registration purposes. A plate was used that gives detailed information about the vehicle but it was not generally used for vehicle identification - Car Number Plates.

Early Chevrolet cars & trucks used Car Number Plates to identify where the vehicle was made, which month it was made, show the series and the number of the vehicle as it came off the assembly line. Most early wood-bodied models had this plate nailed into the seat frame or the floor on the passenger side. For this reason, they are often missing. A beautiful and accurate reproduction of the Car Number Plate is now available for 1925 thru 1939 cars & trucks. Now you can replace missing or damaged number plates with these show quality reproductions.

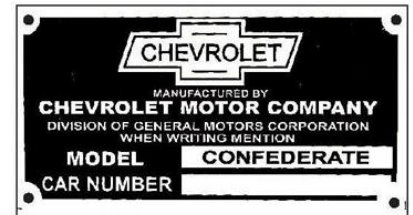
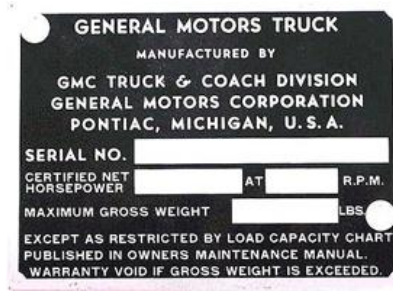
The plates changed each year until 1934. Model names "Superior K", "Superior V", "Capitol", "National", "International", "Universal", "Independence", "Confederate" and "Eagle" were used prior to 1934. From mid-1933 thru 1936 "Master" & "Standard" were used. Starting in 1937, the plates had "Master" & "Deluxe Master". From 1933-1938 most trucks used the Master Car Number plate. Compare to your original plate (if you have it) to be sure.

The Car Number or Model Identification Plate shows the factory of manufacture, series designation (i.e.: BA = 1932 passenger cars), the month of manufacture (1932 and later models) and the car number. Using this example number, we will break down the code: 6BA 03 14173

In the example above, the first number or numbers indicates the factory where the vehicle was manufactured. Referring to the table below, the number "6" indicates that the factory where this vehicle was manufactured was Oakland, California. The letters "BA" indicate that this was a 1932 series passenger vehicle and the model was called "Confederate". The second table lists the 1925 to 1939 series and model designations that were used on all passenger cars and most trucks:

**6BA 03 14173**

## EXAMPLE PLATES



YEAR	SERIES	MODEL
1925	V	Superior
1926	K	Superior
1927	AA	Capitol
1928	AB	National
1929	AC	International
1930	AD	Universal
1931	AE	Independence
1932	BA	Confederate
1933	CA	Eagle
1933-36	Car & Truck	Master
1933-36	Std Car	Standard
1937-39	Car & Truck	Master
1937-39	Deluxe Car	Deluxe Master



## *SCHEDULE OF EVENTS*

.....Continued from page 3

The numbers "03" indicates the month that the vehicle was manufactured - March of 1932. If the number was "11", that would indicate that the vehicle was manufactured in November of 1931. This part of the serial number was not used until the 1932 production (model year), therefore, 1931 and earlier models will not have these two numbers.

The number "14173" (model series unit number) indicates that this is the 13,173rd vehicle to come off the Oakland assembly line in 1932. (Note that the numbering started at 1,001).

In 1932, there were two different Car Number Plates used. All 1932 models had a 2-digit month of manufacture added to the number. Early production vehicles used "Car Number" on the plate, just like the 1931 models. Later production models used a new plate that had a longer field for the number. In order to make room for the longer number, the words "Car Number" were shortened to "Car No.". From 1932 and later "Car No." was used.

Most of these plates are in stock and ready for shipping. Make your restoration truly complete with a new, show quality Car Number Plate!

Reprinted with permission from The Filling Station, supplier of reproduction vintage Chevrolet parts.  
<https://www.fillingstation.com/>



*PICTURES  
FROM THE  
MAY MEETING  
AT THE  
ESTRELLA  
WARBIRDS,  
WINGS AND  
WHEELS CAR  
SHOW*

June 9 Meeting at Pismo Coffee and Cars 8:30 at Quarter Deck

July 8, Mad Bombers Car Show, Santa Maria. Monthly meeting at the show

August 24 Monthly meeting at the Mendenhall Museum

September 15 Meeting at NCRS Car Show

October 10-13 AACA Annual Meet and Car Show Hershey, PA

October Date TBD- Tour of Tom Meleo's Garage

November 10 Meeting at Pismo Coffee and Cars 8:30 at QuarterDeck

December 14- 6:00 PM Holiday Party at the Madonna Inn Copper Café.